

# Complete-Comfort System

Air Conditioner/Heat Pump & Air Handler  
*up to* **24.5 SEER** iQ Drive®



## FRIGIDAIRE

COMFORT THAT FITS YOUR LIFE





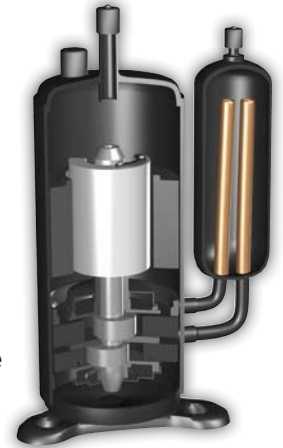
## HIGH EFFICIENCY, HIGHLY COMFORTABLE.

The Frigidaire iQ Drive® Complete Comfort System is quite simply the smartest comfort system available. At almost 90 percent more efficient than a basic system, it can drastically reduce your energy bills while dramatically improving the comfort of your home. Less humidity. More even temperatures. Ultra quiet. All from a system that's so easy to use, it tells you if something is wrong. For the absolute best in total home comfort, choose the Frigidaire iQ Drive.

### iQ Drive technology.

iQ Drive air conditioners and heat pumps utilize inverter-driven rotary technology, and they are currently the only ducted applications of this technology in North America. The iQ Drive system's inverter component converts the electrical current from AC to DC and, in doing so, can almost infinitely vary the compressor and fan motor speeds.

Inverter-driven rotary technology is different in that it is almost always running. The unit can modulate anywhere from 40 to 118 percent of capacity, instantly adjusting to exactly offset the cooling or heating demands on the home. Because the iQ Drive unit doesn't cycle on and off like a traditional system, it saves energy and considerably reduces sound levels. In fact, sound ratings are from 59 to 72 decibels, the lowest in the industry.



### Frigidaire fits your life.

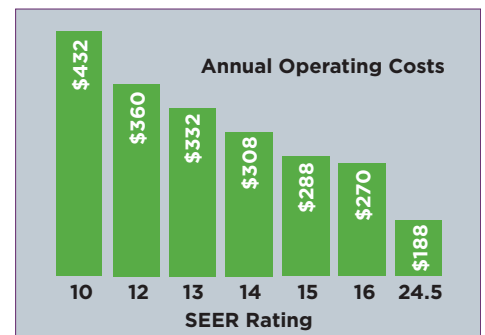
- **Delivering peace of mind unit after unit.** Every unit is triple checked at each manufacturing stage, for an average of 144 quality checks as your unit is built. In addition, all electrical and mechanical components are 100% fired and tested on the manufacturing line. When your dealer arrives, you can be sure that only the highest quality air conditioner or heat pump is being delivered to your home.
- **Incredibly quiet.** The iQ Drive air conditioner and heat pump include swept wing fan blades, absorbing base pans, compressor sound blankets and highly effective mufflers to decrease energy consumption and sound levels.
- **Aesthetically pleasing and designed for easy care.** Smooth and practical lines make your Frigidaire unit eye-appealing. All outdoor units are finished with a Silicone protective polyurethane finish that passed a 950-hour salt spray test. This step protects your unit from corrosion 50% more than standard outdoor finishes.



# FRIGIDAIRE

COMFORT THAT FITS YOUR LIFE

### Extreme energy savings.



Annual costs based on 36,000 Btu unit, 1,500 cooling load hours, and .08/kwh. Actual costs may vary depending on climate conditions, energy rates and patterns of usage.



## The command center.

The power center of an iQ Drive® system is its patent-pending controller. Installed inside the home, the controller “talks” to the outdoor unit, assessing the cooling load of the space and using the information to compute and communicate the ideal speeds to the inverter and indoor fan. This communication occurs multiple times every second for nearly constant interaction.

When paired with an air handler, the controller also calibrates the indoor blower on a periodic basis, performing a load calculation on the duct system and measuring resistance to airflow in order to learn the duct characteristics of the home and perform at optimum efficiency.

In addition to the above, your iQ Drive controller lets you:

- Automatically increase or decrease temperature for the times you need the most comfort, and reduce energy use when you don’t – such as a work schedule.
- Program a 7- or 5-day schedule, or a separate vacation schedule for when you’re out of town.
- Easily read temperature, program operation and any maintenance reminders programmed into the system on the thermostat’s blue digital screen.
- Know if there is a system problem. If the system detects a performance error, the screen will automatically flash red. The controller is designed to help the technician identify the cause of the error, making service quick and easy.



	Awards	ecoLogic™ Seal	ENERGY STAR	Cooling Efficiency	Heating Efficiency
iQ Drive® Air Conditioner				up to 24.5 SEER	N/A
iQ Drive® Heat Pump				up to 22 SEER	up to 10 HSPF

### Heat pump or air conditioner?

The 24.5 SEER iQ Drive air conditioner is an excellent choice for geographies where maximum cooling efficiency is needed. In areas where heating efficiency is also desired, consider the 22 SEER heat pump. It operates in the summer the same as an air conditioner, but also provides heat in the winter. And with an HSPF (Heating Season Performance Factor) up to 10.0, it’s incredibly efficient no matter what the weather.

## Energy Definitions.

### SEER (Seasonal Energy Efficiency Ratio)

Measures cooling performance on air conditioners, heat pumps and gas/electric package products.

### HSPF (Heating Season Performance Factor)

The measure of the average number of Btu’s of heat delivered for every Watt-hour of electricity used by the heat pump over the heating season.

### AFUE (Annual Fuel Utilization Efficiency)

It measures the amount of heat actually delivered to your house compared to the amount of fuel that you supply to the furnace. Thus, a furnace that has an 80% AFUE rating converts 80% of the fuel that you supply to heat - the other 20% is lost out of the chimney.

As ratings increase, so does unit efficiency.



Frigidaire iQ Drive systems are energy-efficient, environmentally responsible products. Look for the ecoLogic™ seal. All Frigidaire split systems feature the latest environmentally-friendly refrigerant technology, R-410A.

# For ultimate comfort, consider iQZone™

iQ Zone™ works hand-in-hand with your iQ Drive system to create separate comfort zones in your home. Now you can easily have the bedrooms cooler than the kitchen, or the rarely used den a different temperature than the family room. It's your home. Customize it to your comfort.



iQ Zone offers these benefits.

- Independent temperature control in up to 8 zones served by one unit.
- May increase energy savings.
- Superior comfort.
- Elegant touch-panel control.
- Easy to use.

Ask your Frigidaire dealer for details on iQ Zone or visit [www.frigidaire.net](http://www.frigidaire.net).

Available Summer 2010

# FRIGIDAIRE

COMFORT THAT FITS YOUR LIFE

[www.frigidaire.net](http://www.frigidaire.net)



## Exceptional 10-Year Warranty and Comfort Quality Pledge

Frigidaire offers an incredible customer promise to protect your investment. When registered, every product offers one of the best warranties in the industry – a 10-year limited warranty on all parts and our proprietary Comfort Quality Pledge, which states that if your compressor or heat exchanger fails within the first 10 years, we will replace the entire unit. Speak to your Frigidaire dealer or visit us at [www.frigidaire.net](http://www.frigidaire.net) for warranty details.

Proper sizing and installation of equipment is critical to achieve optimal performance. Split system air conditioners and heat pumps must be matched with appropriate coil components to meet ENERGY STAR criteria. Ask your contractor for details or visit [www.energystar.gov](http://www.energystar.gov).

This product uses environmentally friendly refrigerant. iQ Drive is a registered trademark of NORDYNE. ecoLogic and iQ Zone are trademarks of NORDYNE. Trademark Frigidaire is a registered trademark used under license from Frigidaire International Company, U.S.A. ©2010 NORDYNE. All Rights Reserved. 291C-0510

Specifications and illustrations subject to change without notice and without incurring obligation.

